

WALTZ MILL



Westinghouse Electric Company

680 Waltz Mill Road, Madison, PA 15663 USA

+1 724-722-5161

- In addition to the typical office and industrial work environments at Waltz Mill, there are also radiological work environments. Access to these environments is restricted by regulatory requirements to only those with specific training. These areas are posted with yellow & magenta colored signs.
- Training and a Radiological Work Permit (RWP) are required to be completed with Health Physics (HP) personnel.
- Personal dosimetry is required in these areas



Business Hours

Regular business hours are Monday – Friday, 7:30 AM – 4:00 PM

Open to for business needs 24/7/365

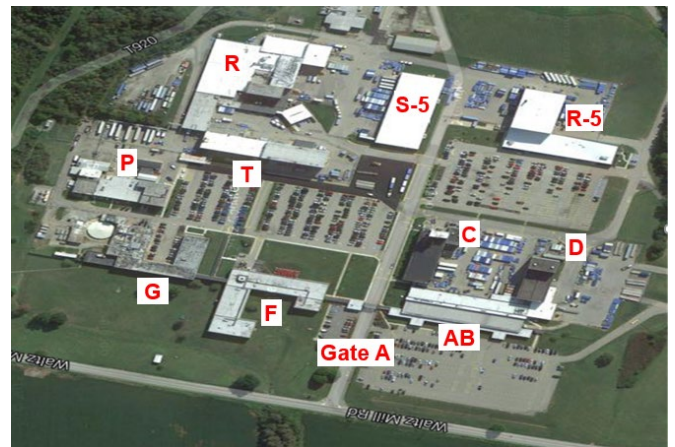
Medical Records Office: Monday 7:30-4:00, Wednesday 7:30-2:00, Thursday 9:30-4:00

Cafeteria: Market C (limited food) Sunday-Saturday 24 hour availability

Fitness Center: Daily (Sun-Sat), 24 hour availability

Amenities

- Security Office – ABX3
- Cafeteria – F Building 1st Floor
- Medical – F Building 1st Floor
- Fitness Center – EH Building 2nd Floor
- ATM – F Building 1st Floor
- Shipping & Receiving – D-Bay
- Mail Room – In Shipping & Receiving
- Environment, Health & Safety – P Building
- Health Physics – R, T, & R5 Buildings
- Facilities – P Building



Security Services

Located at Gate A (724) 722-5161 securitywm@westinghouse.com

Security is available 24/7/365

Site Lead: (724) 722-5157

- Access Control
- Credentialing
- Emergency Response
- Vehicle Assistance
- Facility Patrols
- Event/Incident Investigation & Reporting
- Parking Enforcement

WALTZ MILL

Emergencies

In the event you see a fire or smoke from a **Fire**:

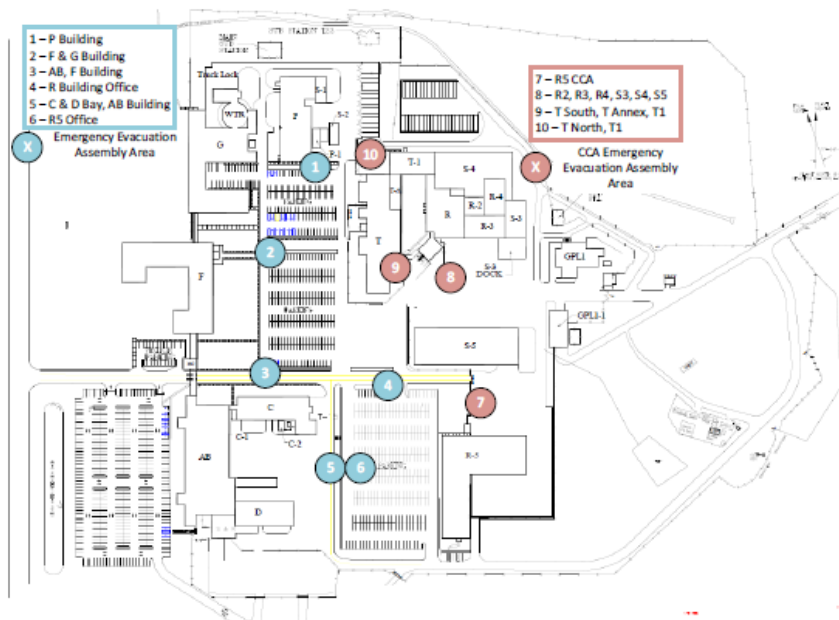
- Activate the nearest wall mounted pull station
- Evacuate the building
- Call 911 or 5911 from any site phone, 5911 from an internet-based “soft” phone, or 724-722-5911 from a cell phone. **DO NOT CALL 911 DIRECTLY FROM A CELL PHONE.**
- Report the location and brief extent of the fire

In the event of a **Medical** situation:

- The Waltz Mill Site no longer staffs a medical department,
- Contact Gate A for medical assistance 24/7. Emergency responders, on or off site, will be contacted by site security (An ambulance will be called immediately upon notice of a patient with chest pains, shortness of breath or altered level of consciousness).
- **Workcare, for Westinghouse, WECTEC, and BHI Personnel must be contacted for any incidents beyond minor first aid. Their phone number is 1-888-449-7787.**

Assembly Areas

Main Site



WALTZ MILL

East Site

