

BlueRad HD Underwater Camera

Background

To improve the overall optical quality of underwater inspections, Westinghouse has developed an all-digital, high definition, underwater inspection system to allow Utilities to see what they have been missing.

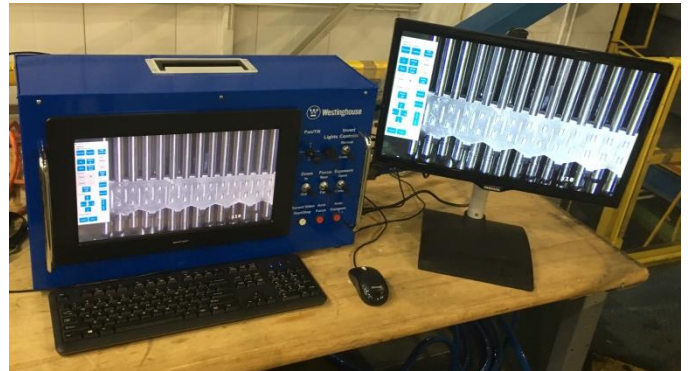
Description

The Westinghouse BlueRad underwater camera includes:



BlueRad Camera

- Features:
 - Full 1920 x 1080 HD Resolution
 - Touch screen and manual controls
 - Remote operations with any computer
 - Built-in high definition H.264 encoding and image capture
 - High intensity LED lighting that pans and tilts with the camera
 - (4) interchangeable lenses allow the operator to customize the zoom to the inspection conditions
 - Underwater cable can be made up to 300' in length
 - Radiation tolerant up to 70,000 Rads of Co-60 equivalent exposure



Controller with External Monitor

- Outputs:
 - HDMI: 1080P (digital)
 - SDI: 1080P (digital)
 - Component Video: 1080P (analog)
 - Composite: 525 TV Lines (NTSC)

Benefits

To deliver on our goal of striving to attain zero leakers - prevention, identification and removal of debris is the main obstacle remaining to overcome.

Now, you can see what you have been missing, to assess that a clean, debris free core exists at the end of each refueling.

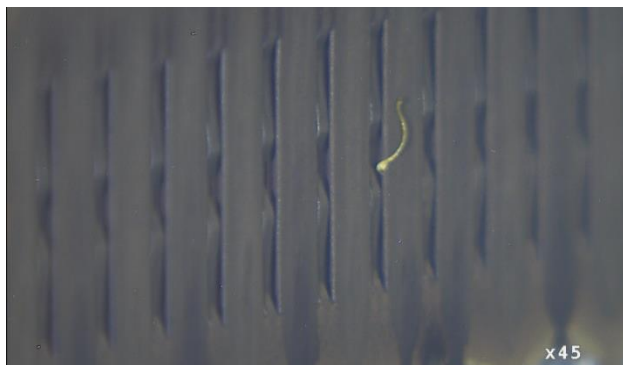
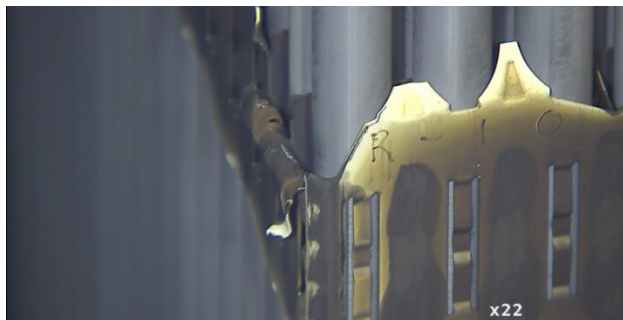
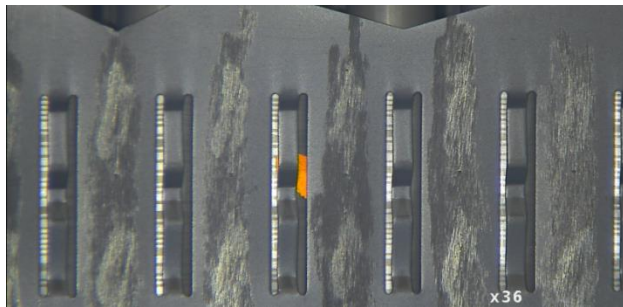
Deliverables

Westinghouse will provide inspection services based on the needs of the individual utility. The inspections are very adaptable to site conditions and specific customer needs. Ask us how we can provide this valuable service to your plant!

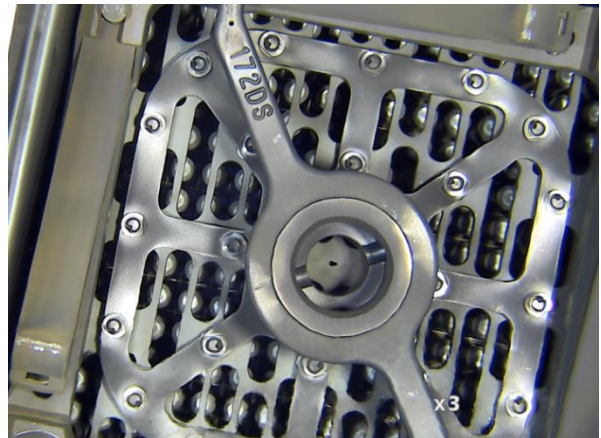
Experience

Westinghouse has combined the latest in optics technology with our extensive fuel inspection experience to build an innovative camera for your inspection needs.

1. Fuel Assembly Visual Exams



2. Spent Fuel and Core Gap Inspections



3. Core Plate Inspections



4. Upper Internals Inspections

